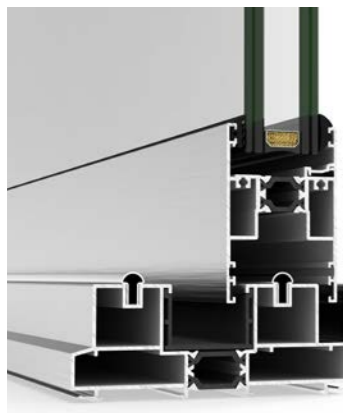


4700

Sliding

Standard sliding system with straight aesthetic and a reduced interlock section of 47 mm, ideal for closing large spans without using a lift & slide solution, it combines great thermal and acoustic performance with large glazed surfaces of up to 88%.

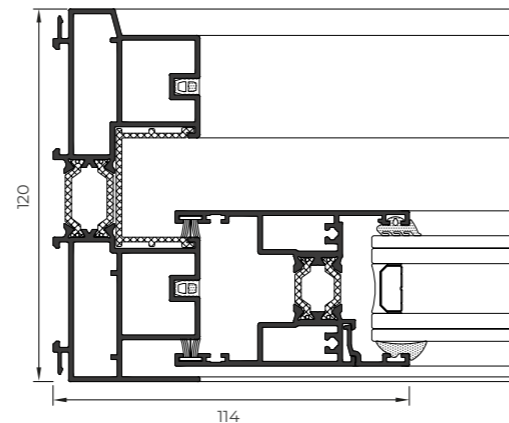
Sliding
Thermally broken



FEATURES

Transmittance		$U_w \geq 1,1 (W/m^2K)$
Acoustic insulation		Rw up to 40 dB
Air permeability		Class 3
Water tightness		Class 7A
Wind resistance		Class C5
Security test		PASSED

Reference Test AEV 1,8 x 2,2 m / 2 Sashes



Sightlines

Frame 115 and 120 mm, 185 mm 3 rails

Sash 50 mm

Polyamide Strip Length

20-25 mm

Profile Thickness

Balcony 1,5 mm

Glazing

Max. 34 mm, Min. 26 mm

Maximum Sash Dimensions

Width (L) 2500 mm, Height (H) 3000 mm

Maximum Sash Weight

280 Kg

Consult maximum weight and dimensions according to typologies

OPENING POSSIBILITIES



Sliding
1 rail (sash + fixed light)
2 and 3 rails
Pocket possibility

POSSIBILITIES



ACCESSIBILITY



4700 CORREDERA