

CorVision Plus Sliding System Thermally Broken

Minimalistic sliding system specially suitable for large dimensions, which allows to have the maximum luminosity with the minimum visible section of aluminium, and makes possible to cover great openings with a glass surface of 94%.

Its extraordinary glazing capacity allows to place glasses of up to 54 mm thickness which guarantees the best acoustic and thermal performance in a system with these characteristics.

It is available in configurations of fixed and sash, 2 and 4 sashes, and the maximum dimensions are 4.000 mm/sash width / height.

It has a visible section of just 25 mm and the possibility to inlay totally the bottom, lateral and top frames.

It counts with the possibility of motorized opening for weights up to 700 kg, and manual opening for up to 400 kg. Additionally, it allows to place multipoint lock systems by operating rod, with or without key.

The rollers are placed in the frame, and the sashes count with a stainless steel reinforced channel which makes the sliding movement smoother.

That is a system with a traditional procedure of assembling with a perimeter frame, 45 degree cut; and straight cut in the sashes, which allows to disassemble the sash in case of break of the glass, imperfection in the aluminium profile,...



Cor Vision Plus Sliding System Thermally Broken

Transmittance

Uw from 0,9 (W/m²K)

Please consult typology, dimensions and glass

Acoustic insulation

Maximum glazing: 54 mm

Maximum acoustic insulation **Rw = 43 dBA**

Categories achieved at test centre

Air permeability
(EN 12207): Class 4

Water tightness
(EN 12208): Class 7A* / 9A**

Wind resistance
(EN 12210): Class C3

*Reference test balcony 4,00 x 3,00 m, 2 sashes.

**Reference test balcony 4,00 x 3,00 m, 1 sash + 1 fixed light.

Finishes

Possibility of dual colour
Colour powder coating (RAL, mottled and rough)
Wood effect powder coating
Anti-bacterial powder coating
Anodized



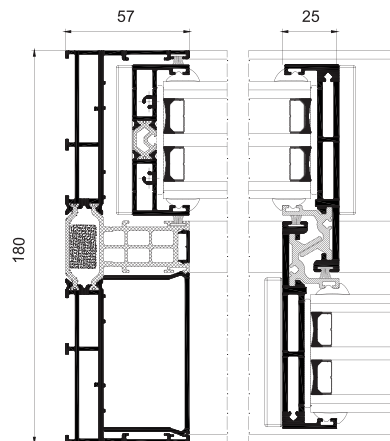
Sections

Frame 180 mm
3 Rails 278 mm
Sash 69 mm

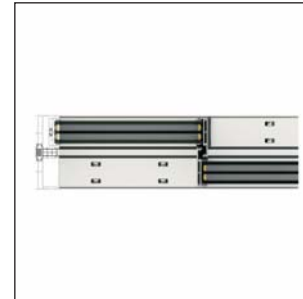
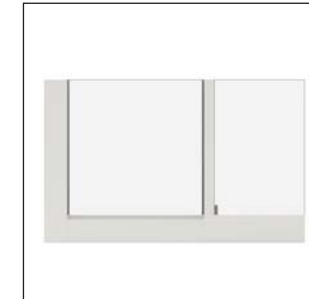
Profile thickness

Door 2,0 mm

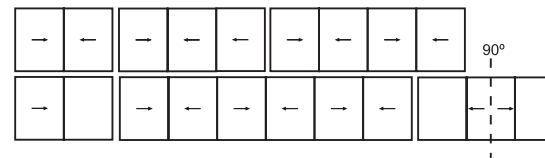
Polyamide strip length Frame 40 mm
Sash 18 - 32 mm



New Solution - Hidden Rail



Opening possibilities



Sliding of 1, 2, 3, 4 & 6 sashes
Possibility of 1, 2 or 3 rails
Possibility of interior and exterior corner sash at 90° without mullion
Galandage possibility in 1, 2, 3 & 4 sashes

Maximum dimensions/sash

Width (L) = 4000 mm
Height (H) = 4000 mm
Glass surface ≤ 14 m²

Consult maximum weight and dimensions according to typologies

Maximum weight/sash

400 Kg Manual
700 Kg Motorized