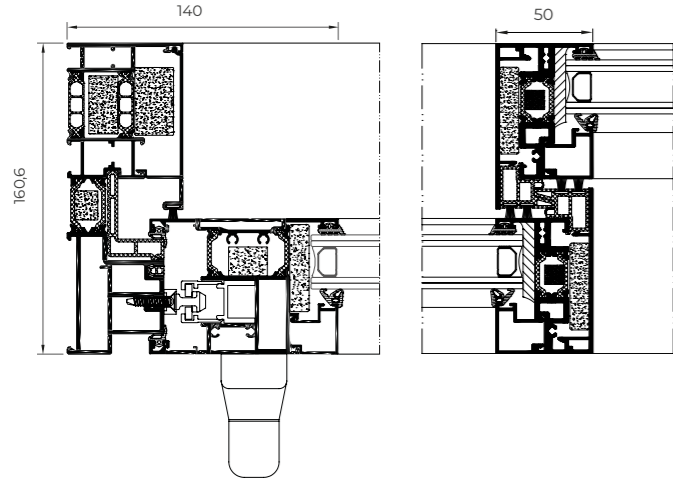


# 4600 HI

## Lift & Slide

Ideal solution to close large spans, offering excellent thermal ( $U_w$  from 0.9  $W/m^2K$ ) and acoustic ( $R_w$  up to 43 dB) performance along with a modern design with straight aesthetics in the sashes and beads. It includes a hardware system that slightly elevates the sash when the handle is operated, facilitating its movement in the opening and closing motions, even in the case of sashes with large dimensions and weight. Possibility of a reduced interlock sightline of 50 mm.



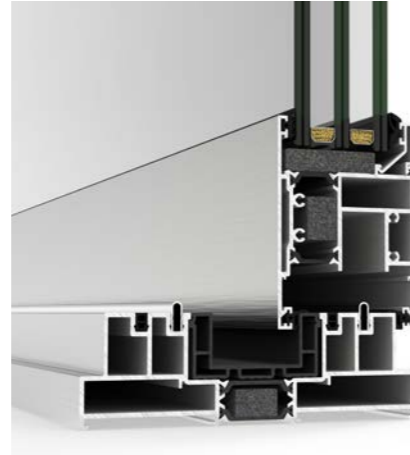
FEATURES		
Transmittance		$U_w \geq 0,9 (W/m^2K)$
Acoustic insulation		$R_w$ hasta 43 dB
Air permeability		Class 4
Water tightness		Class 9A
Wind resistance		Class C5

Reference test 4,0 x 2,4 m / 2 sashes

### POSSIBILITIES



ACCESSIBILITY



#### Sightlines

Frame 160,6 mm / 251 mm 3 rails,  
Sash 70 mm

#### Polyamide Strip Length

Frame 35 mm  
Sash 24 mm

#### Profile Thickness

Door 2,0 mm

#### Glazing

Max. 55 mm, Min. 15 mm

#### Maximum Sash Dimensions

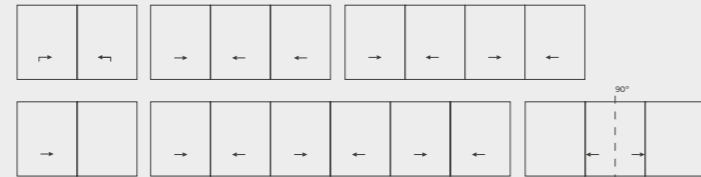
Width (L) 3300 mm, Height (H) 3300 mm

#### Maximum Sash Weight

400 kg

Consult maximum weight and dimensions according to typologies

### OPENING POSSIBILITIES



Sliding

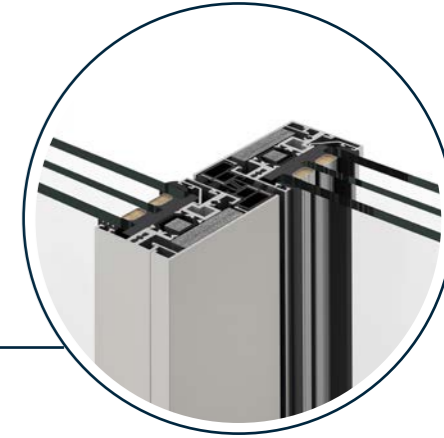
1 rail (sash + fixed light), 2 and 3 rails

Possibility of 90° opening without mullion

Sliding  
Thermally broken



4600 HI LIFT & SLIDE



### REDUCED INTERLOCK

Possibility of a **reduced interlock section of 50 mm** in monorail frame (sash + fixed light) and 2 rail frame, allowing a larger glazed surface

