

## 4700 Sliding System Thermally Broken

System for sliding window and doors with straight aesthetic, which counts with a central minimalistic interlock of just 47 mm of visible section.

It allows maximising the glazing capacity up to 34 mm increasing the acoustic and thermal performance.

Its sashes of up to 280 kg weight allow a maximum dimensions of 2500 (W) x 3000 (H) mm.



# 4700 Sliding System Thermally Broken

## Transmittance

Uw from 1,1 (W/m²K)

Please consult typology, dimensions and glass

## Acoustic insulation

Maximum glazing: 34 mm

Maximum acoustic insulation **Rw = 40 dBA**

## Categories achieved at test centre

Air permeability  
(EN 12207): Class 3

Water tightness  
(EN 12208): Class 7A

Wind resistance  
(EN 12210): Class C5  
Reference test 1,80 x 2,20 m, 2 sashes

## Finishes

Possibility of dual colour  
Colour powder coating (RAL, mottled and rough)  
Wood effect powder coating  
Anti-bacterial powder coating  
Anodized



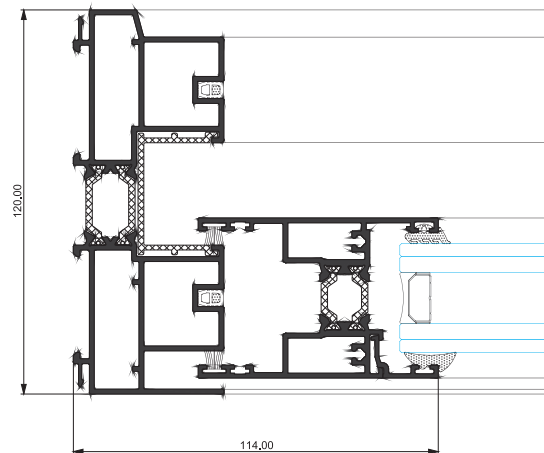
## Sections

Frame 120 / 115 mm  
185 mm 3 Rails  
Sash 50 mm

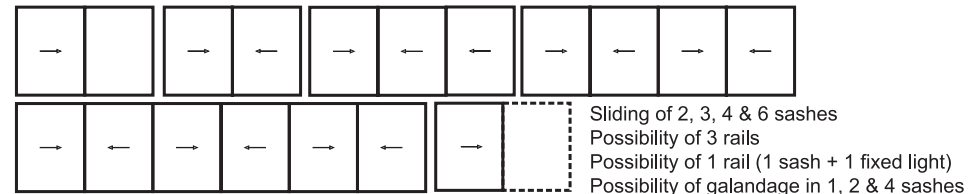
Polyamide strip length 20 - 25 mm

## Profile thickness

Balcony 1,5 mm



## Opening possibilities



## Maximum dimensions/sash

Width (L) = 2500 mm  
Height (H) = 3000 mm

Consult maximum weight and dimensions according to typologies

## Maximum weight/sash

280 Kg